

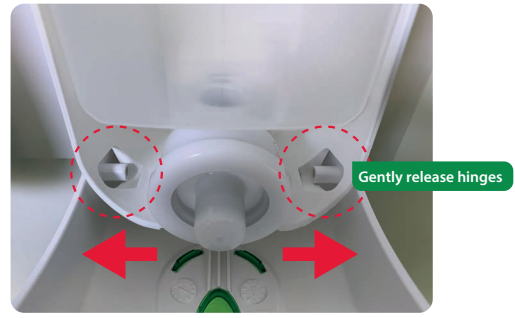
1

Use key to open dispenser



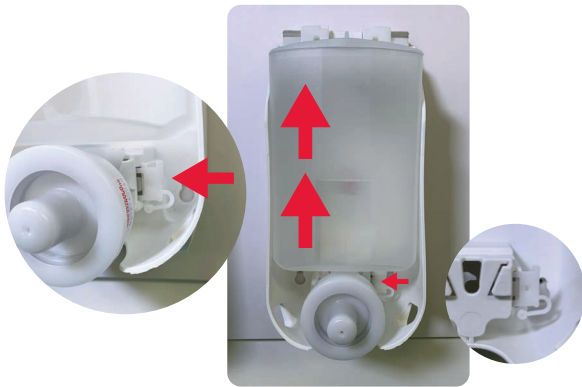
2

Apply outward pressure to remove the dispenser face plate



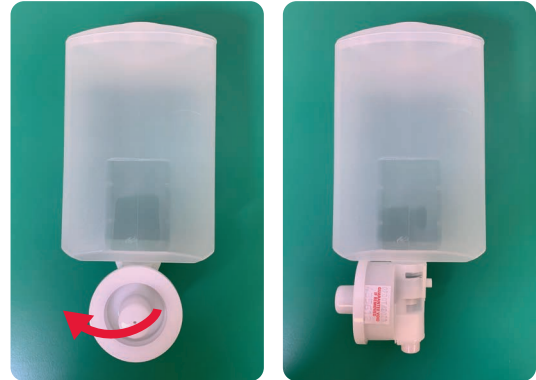
3

Press cradle release button and lift out reservoir and pump unit



4

Rotate foam pump 90 degrees counter clockwise



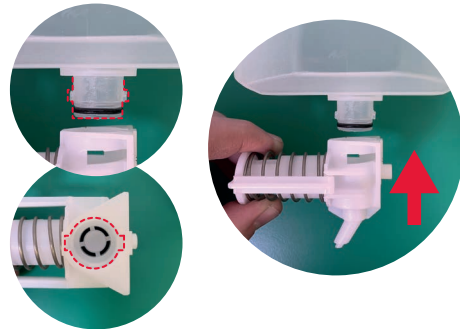
5

Pull down to remove foam pump



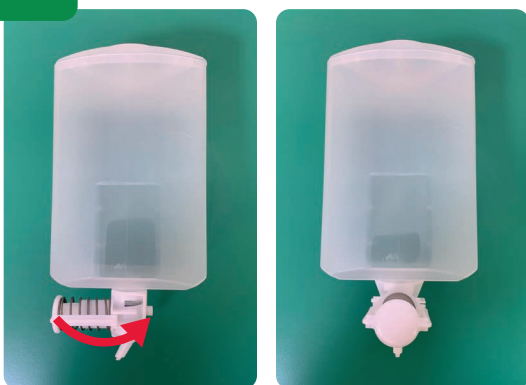
6

Align new liquid pump and push on



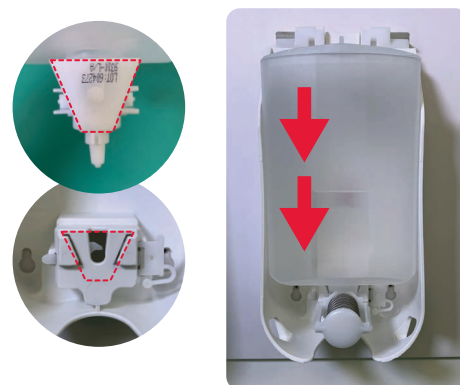
7

Rotate liquid pump clockwise 90 degrees



8

Align rear of pump with cradle and click into place



9

Replace cover and you have completed the conversion. Please retain the foam pump for future use.

